



## ENOVIA Studio Modeling Platform

### Product Overview

While the ENOVIA® brand offers Product Lifecycle Management (PLM) products that cover many product development business processes, the need for companies to tailor or extend ENOVIA products to meet their specific needs is inevitable. In fact, it can be argued that in order to maintain its competitive advantage some aspects of the product development process must be unique compared to how other companies execute their processes. Therefore, in order to deploy the ENOVIA system, companies need to set up an environment that allows them to develop changes to the standard ENOVIA products and test them in conditions that duplicate the actual or projected network and server performance. In order to tailor and configure the environment, ENOVIA® Studio Modeling Platform is required.

ENOVIA Studio Modeling Platform allows companies to install all of their licensed ENOVIA products for use by the ENOVIA implementation team. It includes the right to exactly duplicate the entire licensed product stack on a central development and test server or create “sandbox” development systems for individual employees responsible for the ENOVIA deployment. A license of ENOVIA Studio Modeling Platform must exist for each copy that is made. Changes made to the “sandbox” development systems can be integrated into the central development and test server for overall system and end-user acceptance testing prior to deploying the changes to the production system.

Purchasing ENOVIA Studio Modeling Platform is required in order to configure and validate that all of a company’s business processes can be performed successfully before launching the production system. This is also true for product upgrades or when the production system is expanded to include functionality from additional ENOVIA products not used in prior phases.

### Product Highlights

ENOVIA Studio Modeling Platform provides the configuration and administration capabilities for the ENOVIA PLM environment and allows installation of an exact copy of the production system including ENOVIA® Live Collaboration and all other licensed ENOVIA products. The distribution provided with ENOVIA Studio Modeling Platform is geared for administrators to configure, custom develop, test and validate the non-production systems before deploying such changes to production.

It is quite common for companies to purchase 3rd party development tools to augment their ENOVIA Studio Modeling Platform. Examples of this could be load testing software, source code management systems, and programming development environments.

In addition, some companies actually use their production ENOVIA system to manage its ongoing development and maintenance. For instance, ENOVIA® Program Central™ can direct activities for upgrade projects, and the issue management capabilities of ENOVIA Live Collaboration can be used to track defects to the production system.

ENOVIA is an environment designed from the ground up to support change and flexibility. As an organization’s processes change, customers can easily change the standard processes and user interface to retain their competitive advantage. Companies can easily configure solutions to meet specific business needs. The ENOVIA Studio Modeling Platform provides the necessary tools to quickly configure, and extend the standard product capabilities and business processes.

### Key Customer Benefits

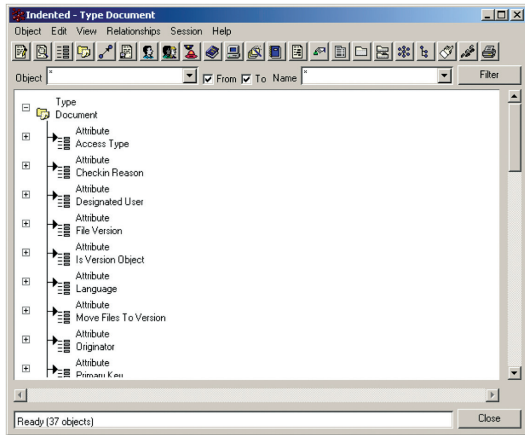
- Avoid bugs that cause system downtime.
- Ensure end user acceptance and achievement of targeted business process improvements.
- Maintain their competitive advantage with unique capabilities without compromising the ability to upgrade to newer releases.
- Expand their ENOVIA deployment to include new product development business processes managed by additional ENOVIA products while validating that existing processes will not be negatively affected.



## Product Highlights (continued)

### User Interface Components

A rich set of user interface tools are provided to deliver significant functionality with minimal programming effort in order to easily change the presentation and capabilities of standard ENOVIA products and best of all, changes are upgradeable with future software updates. The user interface tools are access-controlled to provide role-specific views and are used to model the entire user experience – menus, forms, tables, structure, actions, etc. – in the user's preferred language.



### Dynamic Modeling

The underlying schema and business processes are all modeled and configured using the ENOVIA Studio Modeling Platform. Administrators can easily extend the business model or make changes to the standard model. Such capabilities include the ability to define new business types, attributes, relationships, policies, workflows, organizations, people, etc.

### Advanced Full-text Search Component

Full-text functionality is a standard capability with ENOVIA Live Collaboration. This advanced search functionality is encapsulated into a generic search component that is used throughout the applications, providing a rich and consistent search experience. Administrators can not only use this component in their development, but can extend its behavior through configuration. Configuration includes specifying additional search types and attributes to refine a user's keyword searching. To ensure

### About ENOVIA

ENOVIA is the recognized leader in delivering collaborative PLM solutions. We enable companies from a broad range of industries to dramatically accelerate innovation, time-to-market and revenue generation by collaboratively developing, building and managing products. Our solutions facilitate the sharing of concepts, content and context across product lifecycles and throughout value chains of employees, customers, suppliers and partners.

ENOVIA collaborative PLM solutions help global enterprises bring together people, processes, content and systems to achieve a compelling competitive advantage. Our interoperable solutions unify and streamline processes across the product lifecycle, enabling companies to easily and cost-effectively work on projects within and outside of their enterprises. Our adaptable, scalable technology is built to accommodate the ever-changing marketplace.



scalability and failover support, administrators can deploy additional IDOL servers to maintain optimal performance and scalability.

### Distributed File Store Management

Distributed file storage ensures optimal performance for remote users. Files are copied and placed at various remote file servers positioned close to the end-user for best file transfer times. To establish new remote file stores, administrators can leverage tools provided to clone existing file locations and pre-populate the remote sites with file data; otherwise, data is replicated on-demand as files are accessed by remote users. As disk storage runs low, administrators can purge files that are least-accessed while the master copy is still maintained at a different site. Note that an ENOVIA® File Collaboration Server (FCS) product license is required for each remote site requiring distributed file store management.

With ENOVIA Studio Modeling Platform, companies can ensure that their ENOVIA implementation meets all end user expectations. Standard ENOVIA products can be configured and/or customized with unique differentiators of the company's business processes and fully tested before launched to production.

### The Role of ENOVIA V6 and PLM 2.0

ENOVIA Studio Modeling Platform supports PLM 2.0, product lifecycle management online for everyone, and the ENOVIA V6 values: global collaboration innovation, single PLM platform for intellectual property (IP) management, online creation and collaboration, ready to use PLM business processes, and lower cost of ownership.



For additional information, contact us at:  
Dassault Systèmes ENOVIA Corp. 900 Chelmsford Street, Lowell, Massachusetts 01851  
978 442 2500 • ENOVIA.com • 3DS.com